

Spektron Interactive LED Display User Guide

1. Description

Spektron TDX-70 Full HD anti-glare display with toughened glass & IR touch system with ultra-fast Response time. Includes Detachable PC module, inbuilt android system & Integrated Sound Speakers.

Brand & Model	: Spektron TDX
Monitor Size	: 70
Screen Type	: TFT LED (Thin Film Transistor Liquid Crystal Display)
Display Area	: 1538.88 (H) x 865.62 (V)
Resolution	: 920(H)*1080(V)
Sensing Type	: Multi Touch
Speaker Type	: Built-in (10W*2)
Gross Weight	: 84kg

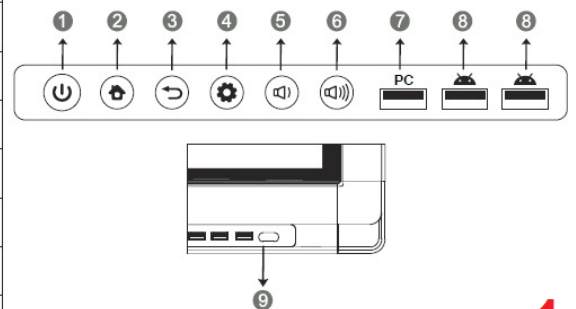


2. Menu Operation & Control Panel

1. Press the PC power button (backside Spektron monitor) to enter standby when power is on; Click the power button(Front side Spektron monitor) to switch on. **(Pic 1)**
2. Connect HDMI or VGA cable directly to a laptop from CBH Board meeting room table. **(Pic 2)**
3. Take a middle point position on the bottom of the Spektron display screen as starting point, Use a touch pen/ finger to drag towards screen center position to call up touch menu. **(Pic 3)**
4. Select media (PC, Andriod, HDMI 1, VGA 1) based on your requirement.

✓ This symbol represents that this channel has been connected to a signal. **(Pic 4)**

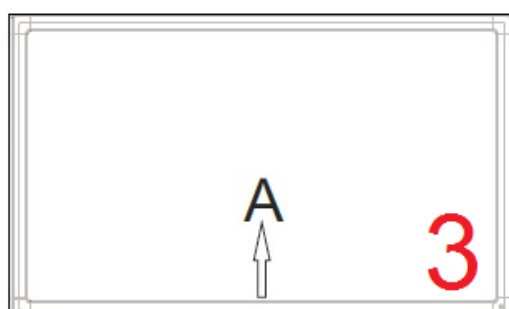
Items	Function description
①	Tap to enter EnergySaving mode Press at least 2 seconds to enter standby mode
②	HOME button: back to home page
③	Return button: return to previous level menu
④	Menu button: call up function menu
⑤	Volume down button: turn down volume
⑥	Volume up button: turn up volume
⑦ PC	Built-in computer USB interface
⑧	USB interface of Android system, which can access storage device to play media files
⑨ Remote control signal receiver	Receiving remote control signal, and do not place any objects to block remote control receiving



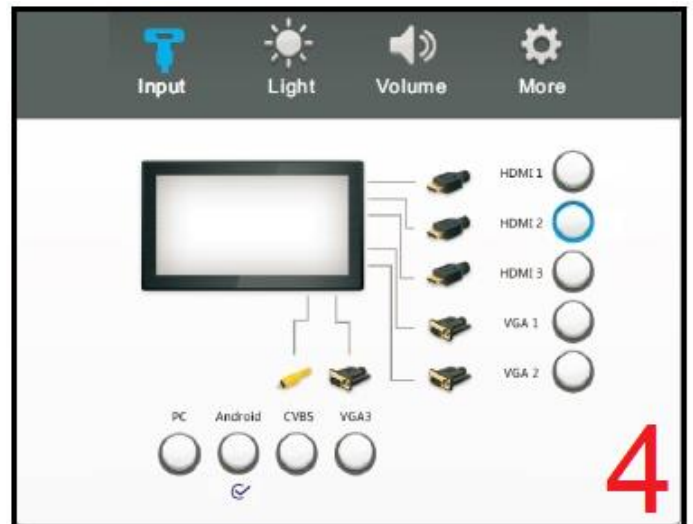
1



2



3



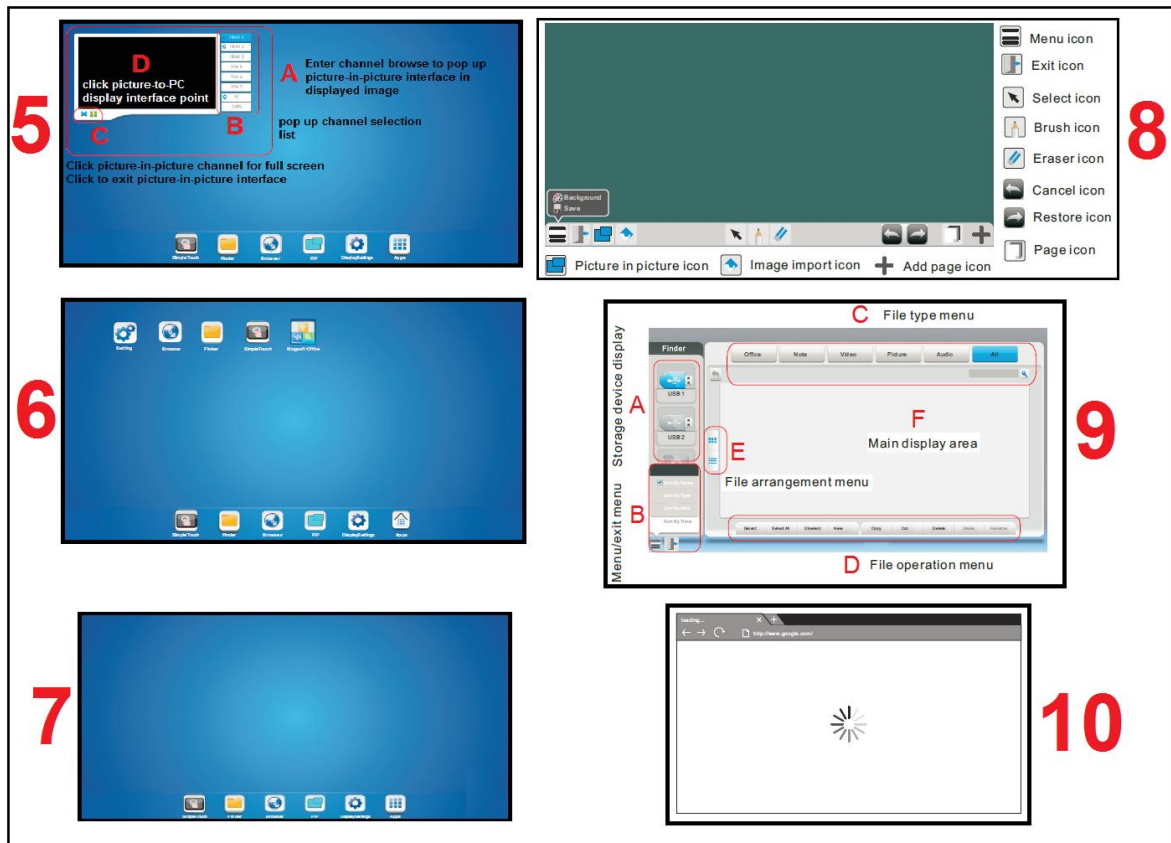
4



Spektron Interactive LED Display User Guide

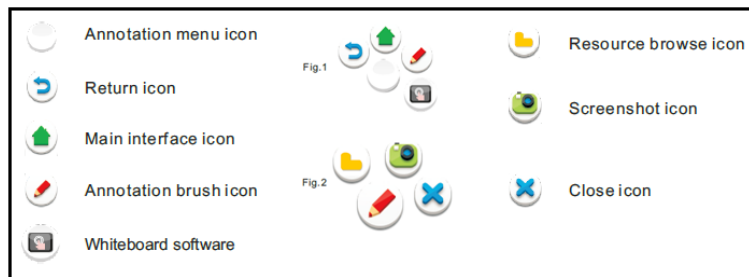
3. Android System Interface (Andriod version 4.2.1)

- Switch to Android channel to display main interface as show (Pic 7)
- PIP : Enter picture-in-picture image (accessing PC module) (Pic 5)
- Apps : Enter limited Android system application management page (Pic 6)
- Simple Touch : Flat panel writing software/smart board (Pic 8)
- Finder : Enter android system resource browser. Internal and External Storage Area (Pic 9)
- Browser : Enter an internet page (Pic 10)



4. Annotation Menu

- Annotation menu is supporting Android & PC Module. Main usage is a short cut, Screenshot & Highlite documents/pic.
- Place two fingers on the screen and stay more than two seconds under any channel to call up annotation menu (Fig:1).
- In annotation, menu is shown in Fig : 2.



5. PC Module (Windows 10)

Softwares : Microsoft Offices, Simple Touch smart board, adobe reader, video recorder, Skype, Etc..

Processor : Intel Core I5, 4GB RAM

Username : **boardmeetingroom@gmail.com**

Password : **CBH_1601**