

## **Sky Garden Projector Manual Instruction Documents**

### **Step 1:**

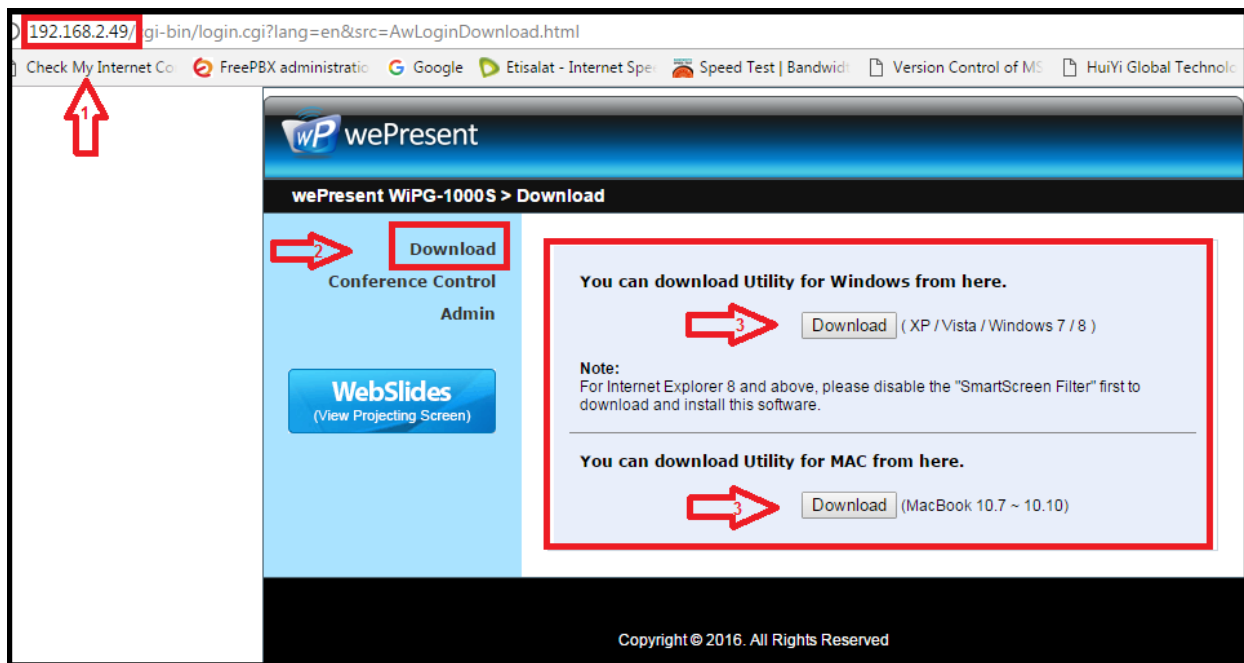
Connect WiFi **"Sky Garden Projector"**.



## **Step 2: (One time only)**

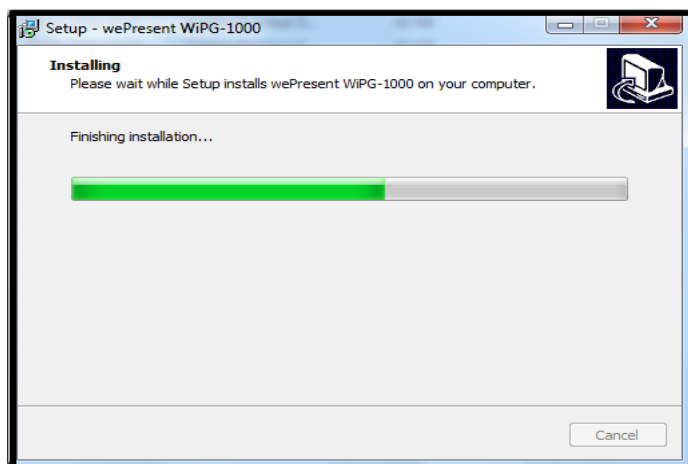
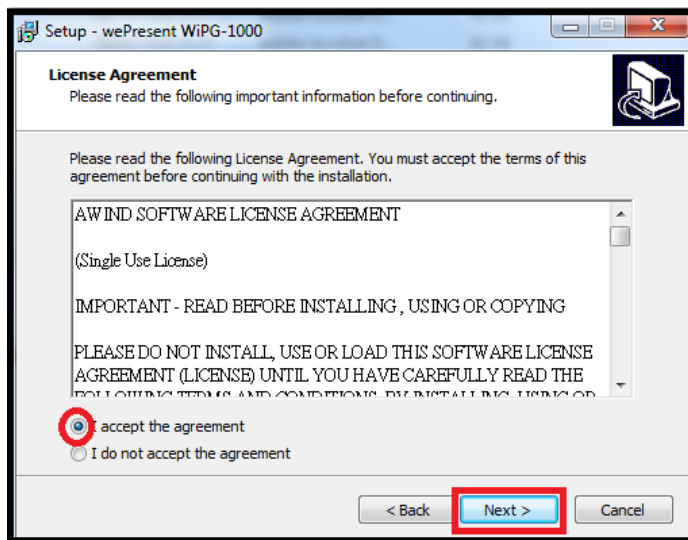
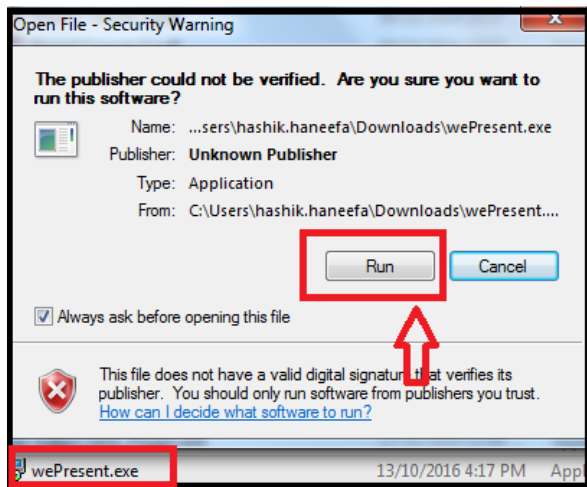
Open browser and type IP address as **192.168.2.49**

Click left **Download** icon and choose the **Download** button based on the operating system for **WePresent** software.



### **Step 3:**

Install **WePresent** software in a Laptop.

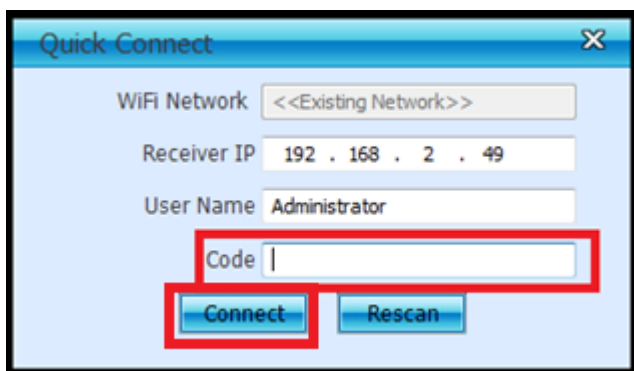


#### **Step 4 (Last):**

Open installed **WePresent** for connecting to projector.

Select WiFi "**Sky Garden Projector**".

Type **code** displayed on screen and **connect** for accessing projector.



**Completed.**